



Khione

A Sanctuary for Your Mind and Soul

NEW 109 Ha
TRANSIT ORIENTED DEVELOPMENT
at Cicayur Station

Khione

A Sanctuary for Your Mind and Soul



Tailored for Timeless Living



Generously Sized

Live requires space to thrive. Khione offers homes that are generously sized, providing your family with the room to breathe and grow. One of our features include an over 40 m² Master Bedroom; allowing ample space for comfort and luxury. These expansive layouts ensure that everyone has their own sanctuary, making it the ideal place to create lasting memories in a spacious and comfortable environment.

Thoughtful Details

Craving a touch of sophistication in your home? Khione homes feature premium interior details that add an element of elegance and refinement. From carefully chosen materials to stylish finishes, every detail is curated to elevate your living experience.

Open Plan Concept

The open plan concept at Khione encourages a seamless flow between living areas, fostering better interaction and connection among family members. This thoughtful design enhances both the social and functional aspects of your daily living, making your home life more cohesive and enjoyable.

Built To Last

Annoyed with constant renovations and upgrades? With high-quality materials and superior craftsmanship, Khione homes are built to last. This ensures that you can enjoy a luxurious lifestyle without the hassle of ongoing maintenance and improvements.

Abundant Natural Light

Where there is light, there is life. Khione homes are designed with ample natural lighting to create bright and welcoming spaces. This not only enhances the aesthetic appeal but also promotes a cozy, uplifting atmosphere that boosts productivity and well-being.



Welcome to Khione, where the grace of the snow goddess meets the elegance of contemporary living. Named after the enchanting deity of winter, Khione epitomizes tranquility and purity, offering a refuge where peace of mind is a cherished gift. Just as Khione blankets the world in serene snowfall, our homes cocoon you in a soothing haven, providing respite from the urban clamor.

Within Khione's embrace, each home is carefully crafted to surpass expectations. Spacious and meticulously designed, our residences offer a refined haven for families seeking an elevated lifestyle. Built with premium materials, bathed in natural light, and featuring an open-space concept, these homes redefine modern living. With elegant details adorning every corner, Khione's interiors exude sophistication and comfort, allowing you own a harmonious space to relax and grow your family.

Step into Khione and discover a sanctuary where serenity and luxury converge; somewhere you can truly enjoy a peace of mind.



Khione

SITEPLAN

UNIT SPECIFICATION

Structure	
Foundation	: Foot Plat / Mini Pile
Floor Finishes	
Living, Dining and Bedroom Area	: Homogeneous Tile 600 x 600 ex. Valentino Gress / equivalent
Staircase	: Homogeneous Tile 600 x 600 ex. Valentino Gress / equivalent
Front Terrace	: Conwood / equivalent
Back Terrace and Balcony	: Homogeneous Tile 600 x 600 ex. Valentino Gress / equivalent
Bathroom	: Homogeneous Tile 600 x 600 ex. Valentino Gress / equivalent with Precut Ceramics 25 x 50
Sanitary	: Grohe / equivalent
Door and Window	
Main Door	: Solid Wood
Main Door Lock	: Digital Smart Door Lock
Internal Door	: Aluminium Frame ex. YKK Madela / equivalent With Engineered Wood HPL Finished
External Door & Window	: Clear Glass with Aluminium Frame ex. YKK Madela / equivalent
Hardware	: Dekkson / equivalent

Wall Finishes	
Interior	: Interior Paint ex. Propan Paint / equivalent
Exterior	: Weather Shield Paint ex. Propan Paint / equivalent
Ceiling	
Interior	: Gypsum Board ex. Elephant / equivalent
Exterior	: Moisture – Resistant Gypsum Board ex. Elephant / equivalent
Roof	
Roof Frame	: Lightweight Steel Structure
Roof Finishes	: uPVC double wall roof ex. Rooftop / equivalent
Canopy	: Solarflat
MEP Provision	
Electricity	: 4400 VA (Nyx) : 5500 VA (Elyon)
Water Supply	: WTP

Nyx

Type 7 x 14

Building Area : 126 m²

Land Area : 98 m²



1st Floor



2nd Floor

 Open Plan Living

 4 Bedrooms

 3 Bathrooms

 2 Carparks



Elyon

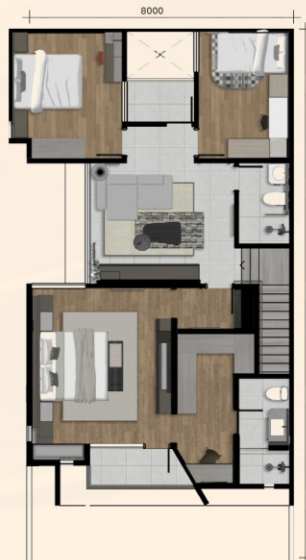
Type 8 x 16

Building Area : 175 m²

Land Area : 128 m²



1st Floor



2nd Floor

 Open Plan Living

 4 + 1 Bedrooms

 4 + 1 Bathrooms

 2 Carparks



LOCATION MAP



STRATEGIC LOCATION

- 1 Minute Cicayur Station
- 3 Minutes Toll Serbaraja
- 9 Minutes Aeon Mall
- 5 Minutes Exit Toll BSD East
- 9 Minutes Cimory Dairyland & Jatim Park
- 40 Minutes Tn. Abang Station
- 45 Minutes Soekarno-Hatta Airport

SURROUNDED BY:

- 5 Malls
- 4 Hospitals
- 9 Schools
- 3 Attractions

LEGENDS

- GSC AREA 109 Ha
- MAIN ROAD
- RAILWAY
- TOLL ROAD
- TOLL ROAD UNDER CONSTRUCTION



SCAN OUR MAP

Marketing Gallery Giantara Serpong City
 Jl. Raya Cisauk - Legok, kec. Cisauk,
 Kab. Tangerang, Banten 15341

For more information, please contact us at:

www.giantaraserpongcity.com

@giantaraserpongcity

@giantaraserpongcity

@giantaraserpongcity

DISCLAIMER - While every reasonable care has been taken in the preparation of this project information, the developer and its agent cannot be held responsible for any inaccuracies. All statements are believed to be correct but should not be regarded as statement or representation of fact. Rendering and illustrations are artist's impressions for presentation purpose only, and cannot be regarded as representation of fact. All information, specifications, renderings, visual representations and plan are subject to change as may be required by the Developer and/or the relevant authorities.